

INSTRUKSJONER TIL BRUKERE AV MIDLERTIDIGE ELEKTRISKE ANLEGG

1. En kompetent person skal ha tilsyn med anlegget og være ansvarlig for driften. Feil bruk av det elektriske anlegget kan medføre fare for personskade og brann.
2. Sentralen skal plasseres loddrett eller på stativ, og med fritt betjeningsområde foran sentralen.
3. Faste tilkoblinger av kabler og bytte av sikringer skal bare utføres av fagfolk. Ved fast tilkobling av gummikabler skal strekkavlastningens klemflate være utført i isolasjonsmateriale. Ikke-fagfolk skal kun betjene jordfeilbryter, automatsikring og uttak for stikkontakter.
4. Sentralens dører skal være lukket og om nødvendig også låst. Dørene skal bare åpnes ved betjening av sentralen.
5. Elektriske apparater som er koblet til sentralen, skal kobles fra eller gjøres spenningsløse når de ikke er i bruk, for å unngå utilsiktet igangsetting eller anvendelse av disse.
6. De elektriske apparatene som brukes, må oppfylle forskriftene og skal enten være utstyrt med ekstra isolasjon eller, i klasse 1-utførelse, med jordet stikkontakt.
7. Kabler må legges slik at de ikke blir skadet. Det gjelder kabler både innenfor og utenfor dørene.
8. Kabler eller apparater med feil skal frakobles og ikke tas i bruk igjen før de defekte delene er skiftet eller reparert.
9. Knivsikring må bare byttes av kompetent personale.

INSTRUCTIONS FOR USERS OF TEMPORARY ELECTRICAL INSTALLATIONS

1. Operation of the installation must be supervised by an authorised person. Incorrect use of the electrical installation could mean risk of personal injury and fire.
2. The distribution unit must be installed vertical or on a stand so that there is free access in front of the unit.
3. Permanent cable connection or replacement of fuses may only be carried out by qualified personnel. Permanently connected rubber-insulated cables must be secured with a restraint that has an insulating gripping surface. Unqualified personnel may only operate earth leakage circuit breakers, miniature circuit breakers and plug sockets.
4. Distribution unit doors must be closed and, where required, also locked. Doors must only be left open when carrying out work on the distribution unit.
5. Electrical equipment that is connected to distribution units must be disconnected or switched off when not in use in order to avoid unintentional starting up or switching on.
6. Electrical equipment that is used must comply with the requirements and must either have additional insulation or comply with class I and have an earthed plug.
7. Cables inside and outside the doors must be routed so as to avoid damaging them.
8. Cables or equipment that are defective must be disconnected and not used until the defective parts have been replaced or repaired.
9. Blade fuses may only be replaced by personnel who have the necessary training.

ARTIKELNR./
ARTICLE NO.
EB15787

MÅKSTRØM/
CURRENT RATING
400 A

SPÅNNING/
VOLTAGE
230 V

MEASURING EQUIPMENT	
CURR.- TRAFO- SPACE	ENERGY- METER- SPACE

FAST ANSLUTNING/ FIXED CONNECTIONS	
<125A	>125A
	1

CEE-OUTLETS 3-POLE			
16A	32A	63A	125A

SCHUKO OUTLETS			
16A			
6			

CEE-OUTLETS 4-POLE			
16A	32A	63A	125A
2	2	1	

CEE-OUTLETS 5-POLE/400V			
16A	32A	63A	125A

JFB/RCD/RCBO		
0,01A	0,03A	0,1A
5	2	

JFB/RCD/RCBO		
0,3A	0,5A	Variable
	2	

VIKT/WEIGHT
140 kg

RITAD AV/DRAWN BY	DATUM/DATE	NEXT SHEET	SHEET
CG	220420	2	1

SIGN	REVISION/ISSUE	RITINGS NR./DRAWING
	A*	EB15787

ZFSF 400NBC 230/01/60221-5022 EN



RITAD AV/DRAWN BY
CG

DATUM/DATE
220420

NEXT SHEET
2

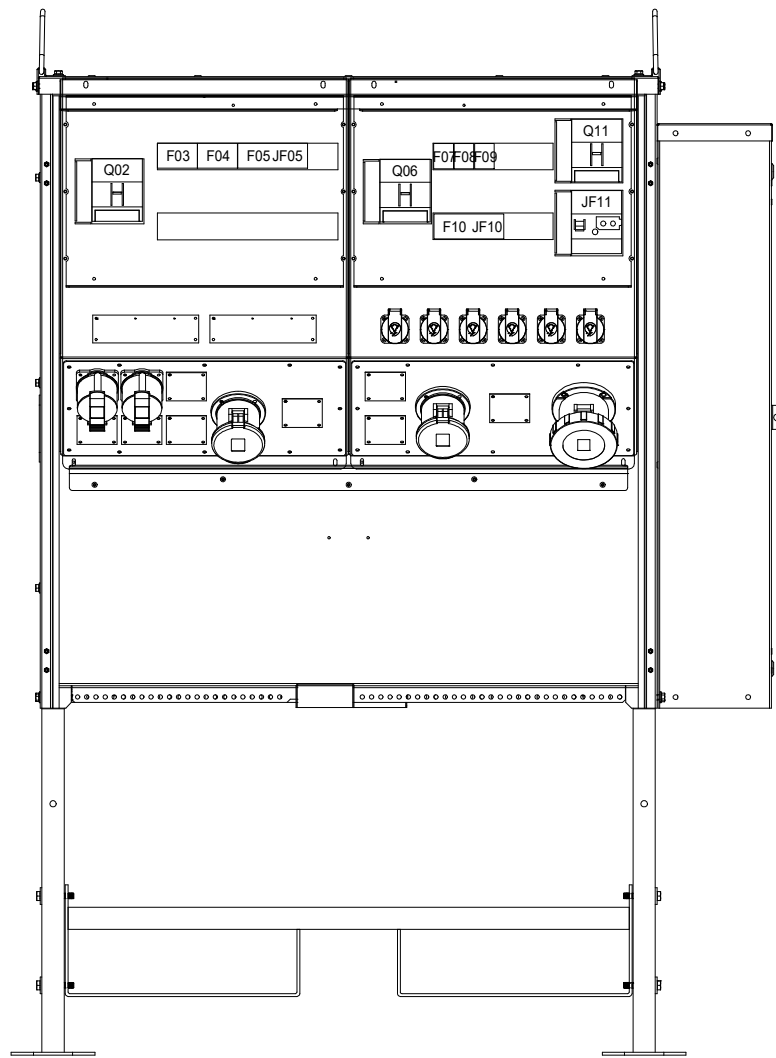
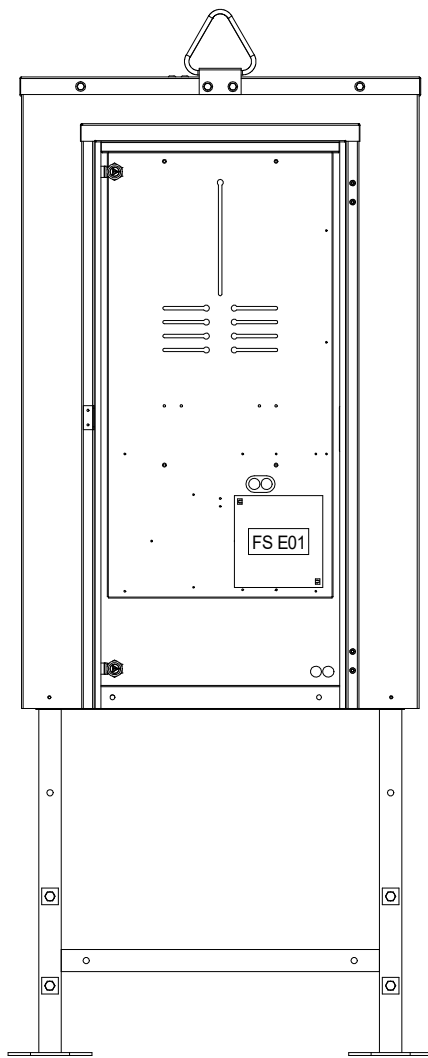
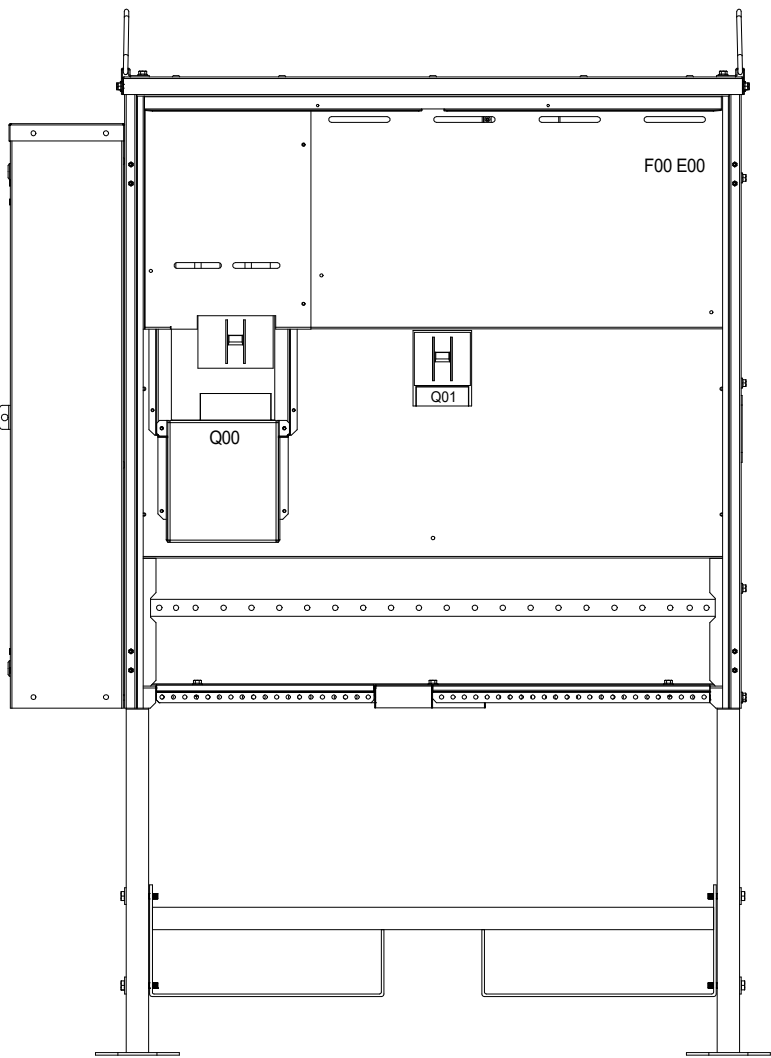
SHEET
1

REVISION/ISSUE
A*

RITINGS NR./DRAWING
EB15787

This drawing is property of El-Björn. May not be copied, shown or distributed without our written permission.

A B C D E F G H J K



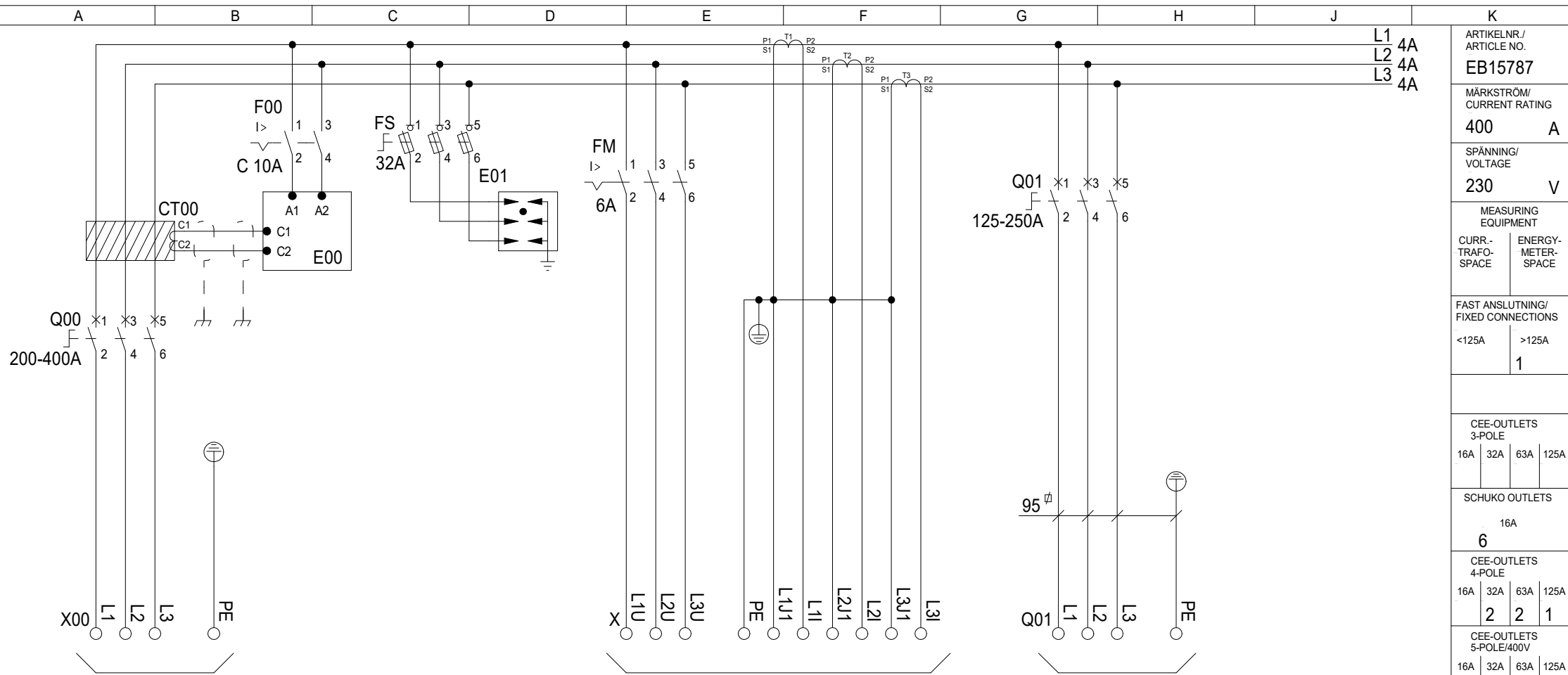
ARTIKELNR./ ARTICLE NO.		EB15787	
MÄRKSTRÖM/ CURRENT RATING		400	A
SPÄNNING/ VOLTAGE		230	V
MEASURING EQUIPMENT			
CURR.- TRAFO- SPACE	ENERGY- METER- SPACE		
FAST ANSLUTNING/ FIXED CONNECTIONS			
<125A	>125A	1	
CEE-OUTLETS 3-POLE			
16A	32A	63A	125A
SCHUKO OUTLETS			
16A			
6			
CEE-OUTLETS 4-POLE			
16A	32A	63A	125A
2	2	1	
CEE-OUTLETS 5-POLE/400V			
16A	32A	63A	125A
JFB/RCD/RCBO			
0,01A	0,03A	0,1A	
5		2	
JFB/RCD/RCBO			
0,3A	0,5A	Variable	
		2	
VIKT/WEIGHT			
140		kg	

This drawing is property of El-Björn. May not be copied, shown or distributed without our written permission.

ZFSF 400NBC 230/01/60221-5022 EN



RITAD AV/DRAWN BY CG	DATUM/DATE 220420	NEXT SHEET 3	SHEET 2
SIGN	REVISION/ISSUE A*	RITTINGS NR./DRAWING EB15787	



2//AL/CU 95-240mm²

MÄTARPLINT

AL/CU 16-185mm²



Skärmadkabel, skärm ansluts mot chassi.

L1 4A
L2 4A
L3 4A

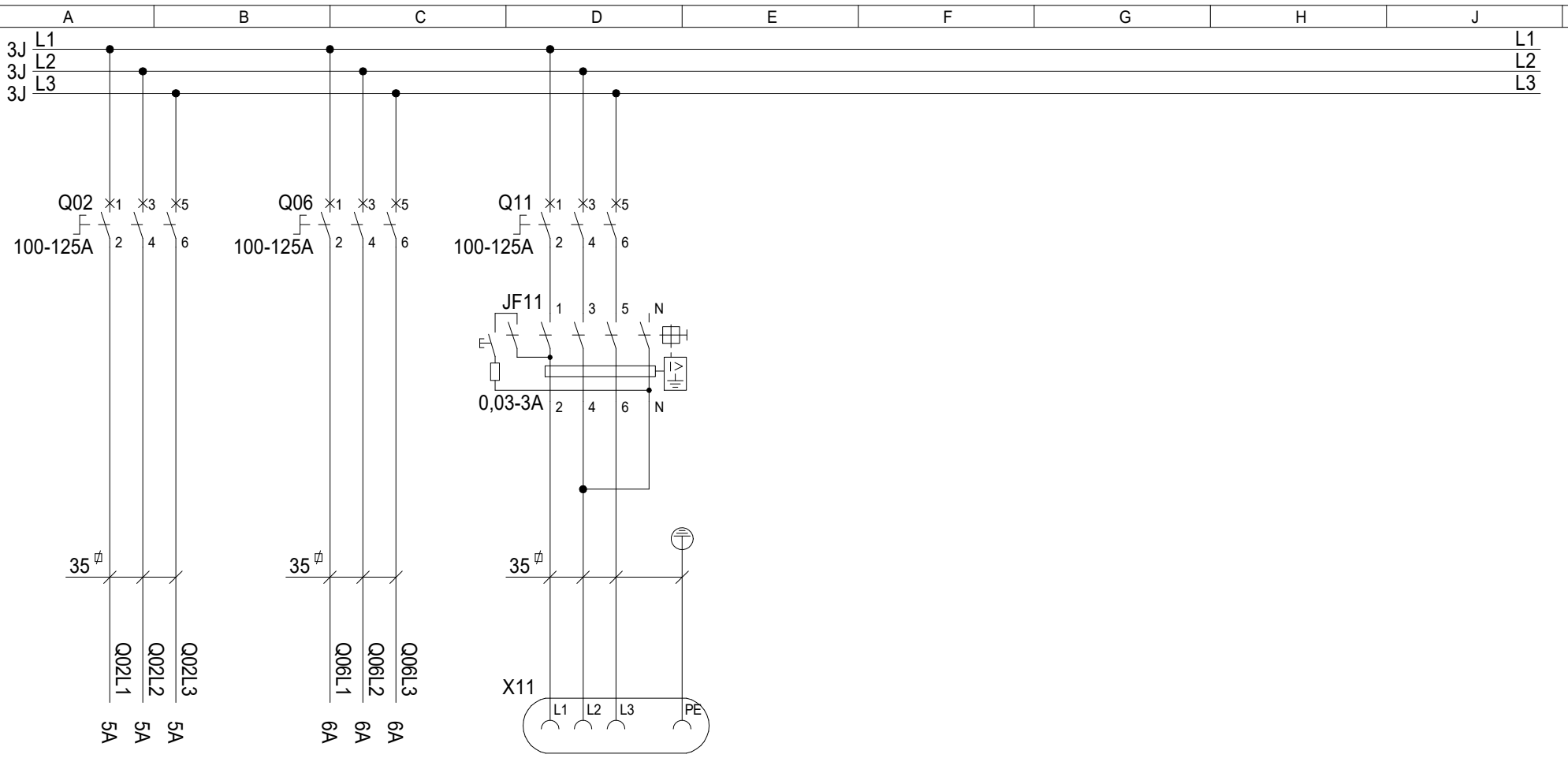
ARTIKELNR./ ARTICLE NO.		EB15787	
MÄRKSTRÖM/ CURRENT RATING		400	A
SPÄNNING/ VOLTAGE		230	V
MEASURING EQUIPMENT			
CURR.- TRAFO- SPACE	ENERGY- METER- SPACE		
FAST ANSLUTNING/ FIXED CONNECTIONS			
<125A		>125A	
		1	
CEE-OUTLETS 3-POLE			
16A	32A	63A	125A
SCHUKO OUTLETS			
16A			
6			
CEE-OUTLETS 4-POLE			
16A	32A	63A	125A
2	2	1	
CEE-OUTLETS 5-POLE/400V			
16A	32A	63A	125A
JFB/RCD/RCBO		0,01A 0,03A 0,1A	
		5 2	
JFB/RCD/RCBO		0,3A 0,5A Variable	
		2	
VIKT/WEIGHT			
140		kg	

This drawing is property of El-Björn. May not be copied, shown or distributed without our written permission.

ZFSF 400NBC 230/01/60221-5022 EN



RITAD AV/DRAWN BY CG	DATUM/DATE 220420	NEXT SHEET 4	SHEET 3
SIGN	REVISION/ISSUE A*	RITNING NR./DRAWING EB15787	



MATNING TILL SÄKRINGAR

MATNING TILL SÄKRINGAR

CEE 3125-9

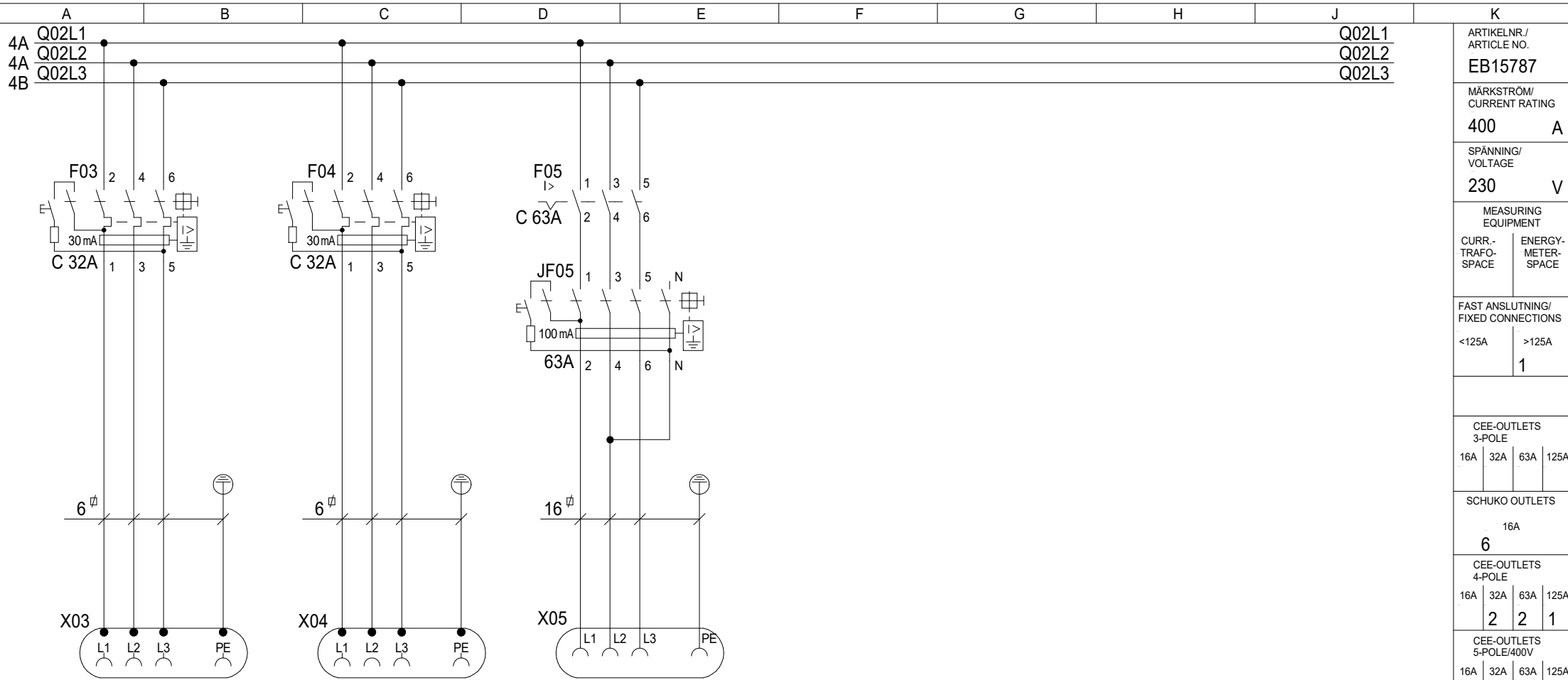
ARTIKELNR./ARTICLE NO.		EB15787	
MÄRKSTRÖM/CURRENT RATING		400	A
SPÄNNING/VOLTAGE		230	V
MEASURING EQUIPMENT			
CURR.-TRAFO-SPACE	ENERGY-METER-SPACE		
FAST ANSLUTNING/FIXED CONNECTIONS			
<125A	>125A	1	
CEE-OUTLETS 3-POLE			
16A	32A	63A	125A
SCHUKO OUTLETS			
16A			
6			
CEE-OUTLETS 4-POLE			
16A	32A	63A	125A
2	2	1	
CEE-OUTLETS 5-POLE/400V			
16A	32A	63A	125A
JFB/RCD/RCBO			
0,01A	0,03A	0,1A	
5		2	
JFB/RCD/RCBO			
0,3A	0,5A	Variable	
		2	
VIKT/WEIGHT			
140		kg	

This drawing is property of El-Björn. May not be copied, shown or distributed without our written permission.

ZFSF 400NBC 230/01/60221-5022 EN



RITAD A/DRAWN BY	DATUM/DATE	NEXT SHEET	SHEET
CG	220420	5	4
SIGN	REVISION/ISSUE	RITINGS NR./DRAWING	
	A*	EB15787	



CEE 332-9

CEE 332-9

CEE 363-9

Q02L1
Q02L2
Q02L3

ARTIKELNR./
ARTICLE NO.
EB15787

MÄRKSTRÖM/
CURRENT RATING
400 A

SPÄNNING/
VOLTAGE
230 V

MEASURING
EQUIPMENT
CURR-
TRAFO-
SPACE ENERGY-
METER-
SPACE

FAST ANSLUTNING/
FIXED CONNECTIONS
<125A >125A
1

CEE-OUTLETS
3-POLE
16A 32A 63A 125A

SCHUKO OUTLETS
16A
6

CEE-OUTLETS
4-POLE
16A 32A 63A 125A
2 2 1

CEE-OUTLETS
5-POLE/400V
16A 32A 63A 125A

JFB/RCD/RCBO
0,01A 0,03A 0,1A
5 2

JFB/RCD/RCBO
0,3A 0,5A Variable
2

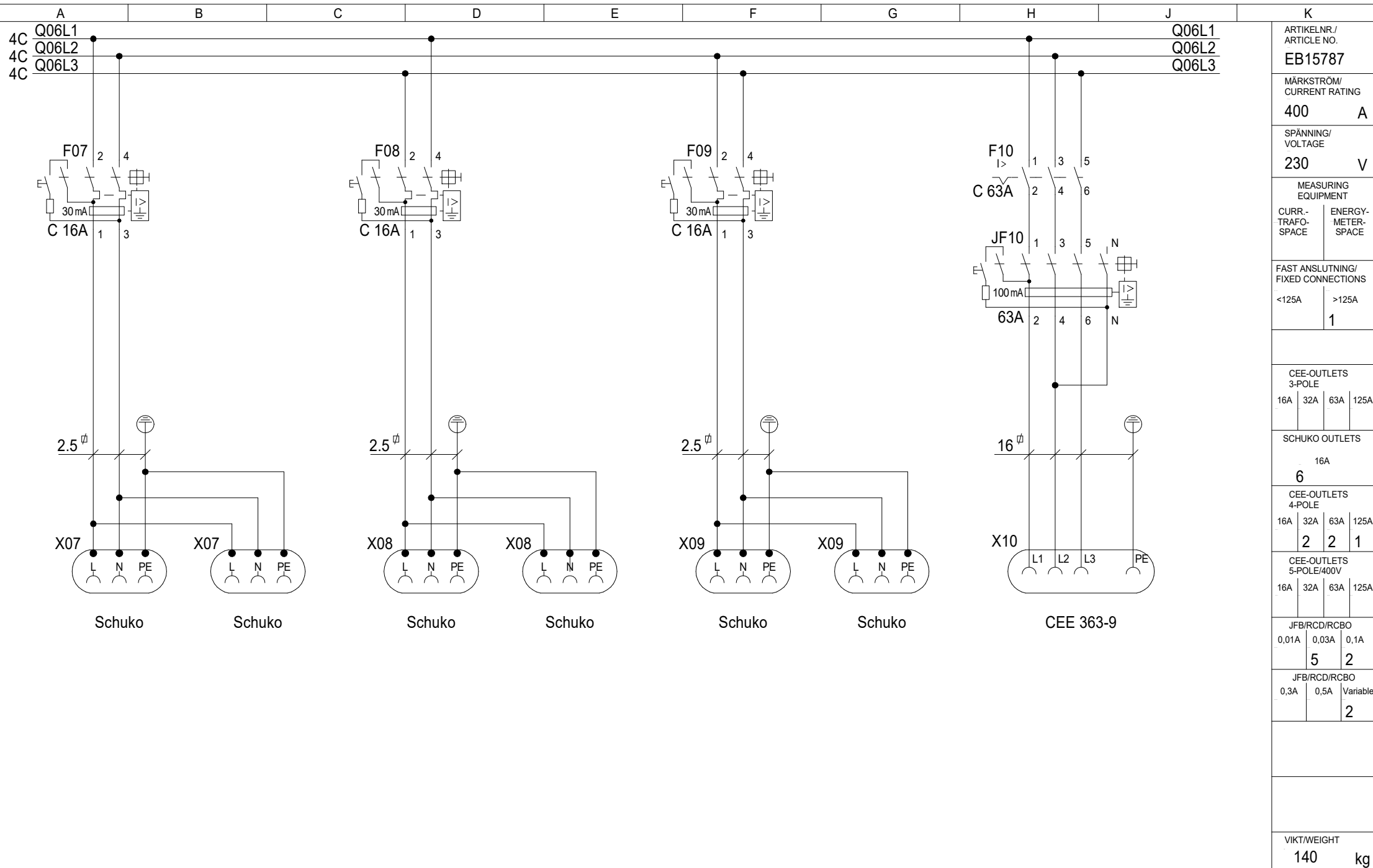
VIKT/WEIGHT
140 kg

RITAD A/DRAWN BY CG	DATUM/DATE 220420	NEXT SHEET 6	SHEET 5
SIGN	REVISION/ISSUE A*	RITNING NR./DRAWING EB15787	

This drawing is property of El-Björn. May not be copied, shown or distributed without our written permission.

ZFSF 400NBC 230/01/60221-5022 EN





Q06L1
Q06L2
Q06L3

ARTIKELNR./
ARTICLE NO.
EB15787

MÄRKSTRÖM/
CURRENT RATING
400 A

SPÄNNING/
VOLTAGE
230 V

MEASURING
EQUIPMENT
CURR-
TRAFO-
SPACE ENERGY-
METER-
SPACE

FAST ANSLUTNING/
FIXED CONNECTIONS
<125A >125A
1

CEE-OUTLETS
3-POLE
16A 32A 63A 125A

SCHUKO OUTLETS
16A
6

CEE-OUTLETS
4-POLE
16A 32A 63A 125A
2 2 1

CEE-OUTLETS
5-POLE/400V
16A 32A 63A 125A

JFB/RCD/RCBO
0,01A 0,03A 0,1A
5 2

JFB/RCD/RCBO
0,3A 0,5A Variable
2

VIKT/WEIGHT
140 kg

This drawing is property of El-Björn. May not be copied, shown or distributed without our written permission.

ZFSF 400NBC 230/01/60221-5022 EN



RITAD A/DRAWN BY CG	DATUM/DATE 220420	NEXT SHEET 7	SHEET 6
SIGN	REVISION/ISSUE A*	RITINGS NR./DRAWING EB15787	

A	B	C	D	E	F	G	H	J	K
PC.	Position	Description	Type	Manufacturer	Data	Article No.	E-number(SE)		ARTIKELNR./ ARTICLE NO. EB15787
1		Skåp	NBC 1100M	EI-Björn AB	1300x1700x800mm	K287008			MÄRKSTRÖM/ CURRENT RATING 400 A
1		Mätarskåp	NBC 230V	EI-Björn AB		K287022			SPÄNNING/ VOLTAGE 230 V
1		Insats	6333	EI-Björn AB	MCCB + 36mod	K287003			MEASURING EQUIPMENT
2		Täckplåt	3 Schuko	EI-Björn AB	50x190, Vit	233116			CURR- TRAFO- SPACE
8		Täckplåt	VE	EI-Björn AB	72x72, Vit	75091			ENERGY- METER- SPACE
1		Insats	61121	EI-Björn AB	MCCB + 24mod + MCCB	K287007			FAST ANSLUTNING/ FIXED CONNECTIONS <125A >125A 1
1	CT00	Summaströmstrafo	CTG120	Carlo Gavazzi	120mm	CTG120	4262831		CEE-OUTLETS 3-POLE 16A 32A 63A 125A
1	E00	Jordfelsrelä	DEB71DM24A5	Carlo Gavazzi	0,03 - 5A	DEB71DM24A5	3860963		SCHUKO OUTLETS 16A 6
1	E01	Överspänningsskydd	SPCT2-385/3	Eaton	20kA, 3P, 385V	167605			CEE-OUTLETS 4-POLE 16A 32A 63A 125A 2 2 1
1	F00	MCB	PLSM-C10/2	Eaton	C 10A, 10kA	242401	2141607		CEE-OUTLETS 5-POLE/400V 16A 32A 63A 125A 5 2
2	F03-F04	RCBO	PKPM3-32/3/C/003-A	Eaton	C 32A, 30mA, 10kA	136564			JFB/RCD/RCBO 0,01A 0,03A 0,1A 5 2
2	F05, F10	MCB	PLSM-C63/3	Eaton	C 63A, 10kA	242480	2141635		JFB/RCD/RCBO 0,3A 0,5A Variable 2
3	F07-F09	RCBO	PKPM2-16/2/C/003-A	Eaton	C 16A, 30mA, 10kA	108111	2162432		VIKT/WEIGHT 140 kg
1	FS	Säkringshållare	DF103	Schneider Electric	3P, 32A, 10x38mm	DF103			RITAD AV/DRAWN BY CG
3		Neozedsäkring	C10G32	Eaton	32A, 10x38mm	C10G32			DATUM/DATE 220420
2	JF05, JF10	RCD	PFIM-63/4/01-A	Eaton	63A, 100mA, A	235444	2162247		NEXT SHEET 7
1	JF11	RCD	NZM1-XFIR	Eaton	0,03-3A, 3P	104605			SHEET 7
1	Q00	MCCB	NZMN3-AE400	Eaton	200-400A, 50kA	259114			REVISION/ISSUE A*
1		B-Skydd	NZM3-XKSA	Eaton		260045			RITNING NR./DRAWING EB15787
1		Etikett	Moment	EI-Björn AB	NZM3	83898			
1	Q01	MCCB	NZMN2-VE250	Eaton	125-250A, 50kA	259124			
1		B-Skydd	NZM2-XKSA	Eaton		260038			
1		Etikett	Moment	EI-Björn AB	NZM2	83897			
3	Q02, Q06, Q11	MCCB	NZMB1-A125	Eaton	100-125A, 25kA	259080			
6	X00	Kabelklämma	AKEB 95-240	Maxeta	95-240mm	8349998			
2	X03-X04	Uttag	332RU9	ABB	32A, 230V, IP44	2CMA193252R1000			
2	X05, X10	Uttag	363RU9	ABB	63A, 230V, IP44	2CMA167524R1000	2416678		
6	X07-X09	Schukouttag	Typ F	Mennekes	16A, 230V, IP54	11020EB			
1	X11	Uttag	3125RU9W	ABB	125A, 230V, IP67	2CMA167138R1000	2416780		

This drawing is property of EI-Björn. May not be copied, shown or distributed without our written permission.

ZFSF 400NBC 230/01/60221-5022 EN



RITAD AV/DRAWN BY CG	DATUM/DATE 220420	NEXT SHEET 7
SIGN	REVISION/ISSUE A*	RITNING NR./DRAWING EB15787